

EstiLo

**A New Breed of System
for POS and hospitality**

IT-6000



 **BIRCH**®

Look beyond and See possibility.

**Comes from European creative
concepts... "ESTILO"**

< ESTILO >... THE MASTERPIECE WHICH IS WITH EXTREMELY
BEAUTIFUL BOUNDARY

IN SPANISH, THE ESTILO REFERS TO THE BEST QUALITY
SCULPTURE PRODUCE BY WAY OF "DELICATE WORK".

WE COMBINE THE CREATIVITY, UP-TO-DATE TECHNOLOGY
AND USER'S INTERFACE TO CREATES THE ESTILO PC THAT
BRING THE CUSTOMERS' UPMOST SATISFACTION
AND CONVENIENCE WHICH WE ALWAYS PURSUE.





Elegant & Superior



IT-6000 Structure

+ ESTILO IT-6000 UNIQUE STREAMLINED OUTLOOK DESIGN

BASED ON THE HUMAN MOST COMFORTABLE VIEWING VISION ANGLE, “L” SHAPE DESIGN MATCHES THE TECHNOLOGY AND THE INNOVATION TO MAKE IT-6000 TO BE CONCISE POWERFUL PRODUCT.

+ ALUMINIUM HOUSINGS AND 5-WIRE RESISTIVE TOUCH TECHNOLOGY

TO ASSURE THE HIGH-END PERFORMANCE AND HIGH-TECH, IT-6000 IS MADE OF ALUMINIUM AND BUILT-IN AU TFT LCD AND 5-WIRE RESISTIVE TOUCH SCREEN(10.4" TFT LCD AS STANDARD, OPTIONAL FOR 12.1" TFT).

+ HIDEAWAY TO BUCKLE CABLE CONNECTION

ALL PERIPHERAL CABLES SUCH AS PRINTER IS FIRMLY CONNECTED TO THE BUCKED TYPE DESIGN HIDDEN INSIDE THE HOUSING. IT-6000 COMES WITH 2 X SHORT CONVERTED CABLE AS STANDARD (OPTIONAL FOR MORE CABLES).



+ FOR USER FRIENDLY APPLICATIONS, USB AND AUDIO CONNECTOR ON THE SIDE OF IT-6000.

--OPTIONAL FOR IButton.

--OPTIONAL FOR MAGNETIC CARD READER AND CUSTOMER DISPLAY (COMING SOON).



BETWEEN THE LINES

+ OPERATION SOFTWARE SUPPORTED

IT-6000 BUILT-IN 5-WIRE ANALOG RESISTIVE TOUCH CONTROLLER WHICH SUPPORTS MS WINDOWS XP/2000/95/98/ME, WINDOWS NT4.0/CE 2.212/3.0/NET, DOS, LINUX REDHAT, LINUX MANDRAKE, MAC/OS 9... ETC.

+ INDUSTRIAL PC MOTHERBOARD STANDARD

IT-6000 BUILT-IN HIGH-END INDUSTRIAL PC M/B STANDARD WHICH IS UNDER STRICT-QUALITY CONTROL SYSTEM AND ISO STANDARDS.

+ CPU RANK BY CELERON

BUILT-IN STYLISH COOL-RUNNING CELERON-M CPU TO PROVIDES HIGH PERFORMANCE AND RELIABILITY.

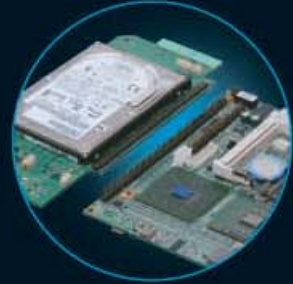
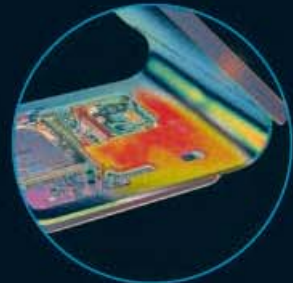
CELERON-M 600/800 MHZ AS STANDARD
(OPTIONAL FOR CELERON 1.3MHZ).

+ HEAT SINK

BESIDES USING COOL-RUNNING CPU, IT-6000 HAS THE ALUMINUM MATERIALS AND SPECIAL DESIGN HEAT SINK FOR FAST RADIATION OF HEATING.

+ MORE FEATURES.....

1. INTEL 852GME + ICH 4
2. SUPPORTS DUAL VIEW ON SECOND VGA.
3. OPTIONAL FOR CF OR DOM(UP TO 4 GB)
4. OPTIONAL FOR 6 CHANNEL SURROUNDING AUDIO 5.1





BIRCH TECHNOLOGY INC.

7F-13, No. 79, SHIN TAI WU ROAD, SEC 1, HSICHIH, TAIPEI HSIEN, TAIWAN

TEL: +886-2-2698-9596 FAX: +886-2-2698-9597

HTTP://WWW.BIRCH.COM.TW E-MAIL: SALES@MAIL.BIRCH.COM.TW

CPU

- + ULV CELERON-M 600MHZ (OPTION 1.3GHZ) BASED INDUSTRIAL GRADE SUB-COMPACT BOARD
- + 256MB DDR SODIM RAM (UPGRADE UP TO 1GB)
- + CHIPSET: INTEL 852GME + ICH4
- + SUPPORTS DUAL VIEW ON SECOND OPTIONAL TFT
- + ETHERNET: INTEL 82562 (10/100MHZ)

DISK

- + HDD 2.5" 40GB (OR HIGHER) OR FLASH DOM UP TO 4GB.
- + OPTIONAL CF, OPTIONAL DOM.

DISPLAY & TOUCH

- + 10.4" TFT AS STANDARD (OPTIONAL FOR 12.1" TFT)
230 Cd. (NITS) HIGH BRIGHTNESS TFT.
- + 5-WIRE RESISTIVE TOUCH.

I/O's

- + 6 SERIAL COM
- + 3 USB 2.0
- + 10/100 MHZ LAN
- + 6 CHANNEL SURROUND AUDIO (5.1) (OPTION)
- + WIFI AND MODEM OPTION THRU MINI-PCI CONNECTOR
- + AC97 AUDIO I/O (STANDARD).
- + PS/2 KBD
- + VGA

PHYSICAL PARAMETERS

- + POWER INPUT: 12 VDC
 - + POWER CONSUMPTION: 20 W
 - + DIMENSIONS (MM): 240 X 240 X 200 (HEIGHT)
 - + OPERATING TEMP: 0-60 DEG.
-